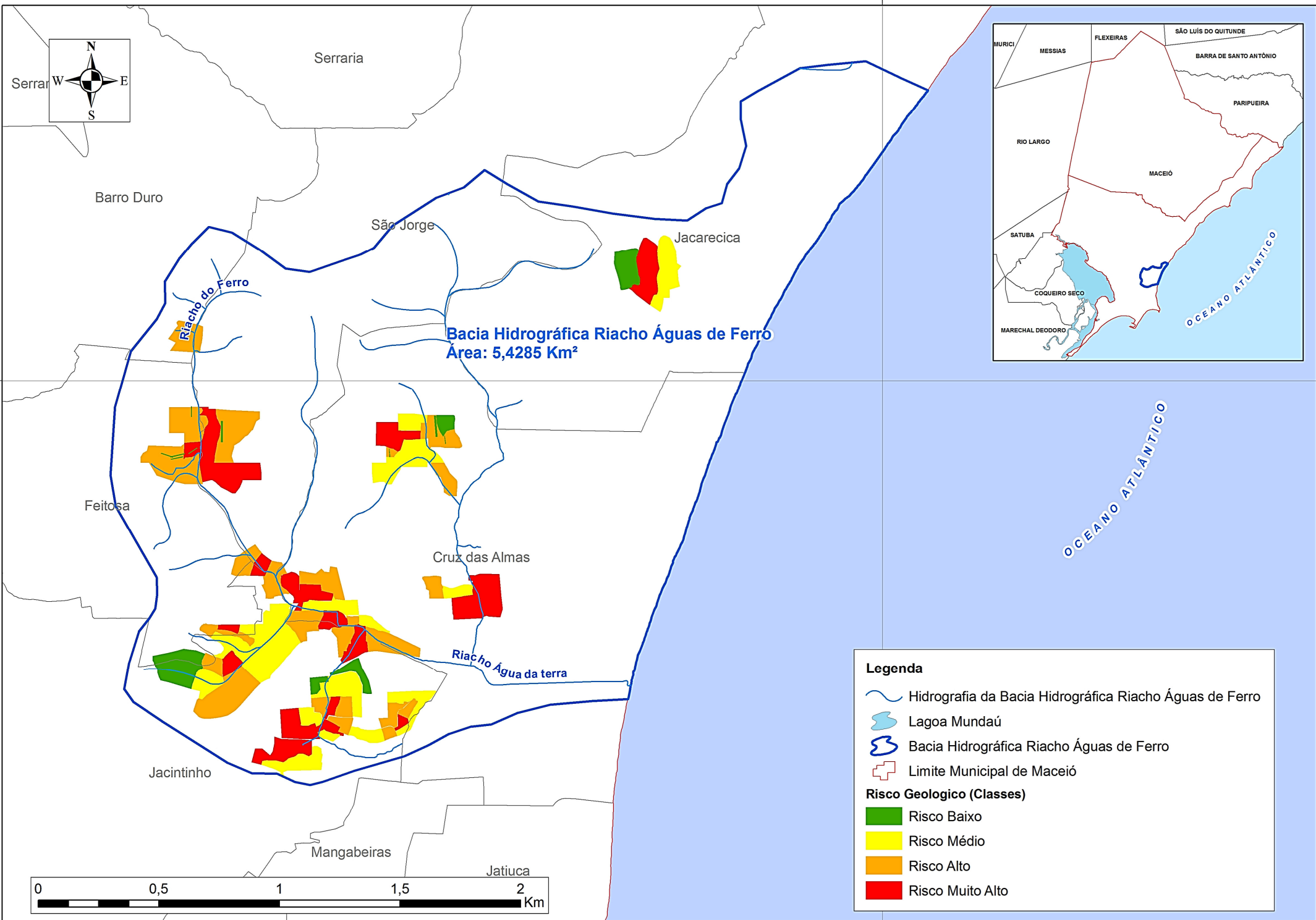


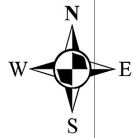


ANEXO 09: FIGURAS RISCOS GEOLÓGICOS



200000

202500

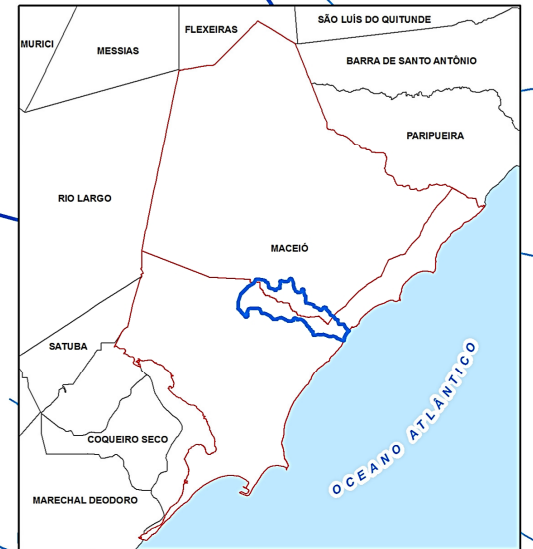


Bacia Hidrográfica Riacho Doce
Área: 17,1141 Km²

Benedito Bentes

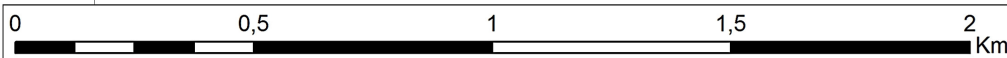
Área Rural de Maceió

Área Urbana de Maceió



Legenda

- Hidrografia da Bacia Hidrográfica Riacho Doce
- Bacia Hidrográfica Riacho Doce
- Limite Zona Urbana e Rural
- Risco Geológico (Classes)**
- Risco Baixo
- Risco Médio
- Risco Alto
- Risco Muito Alto



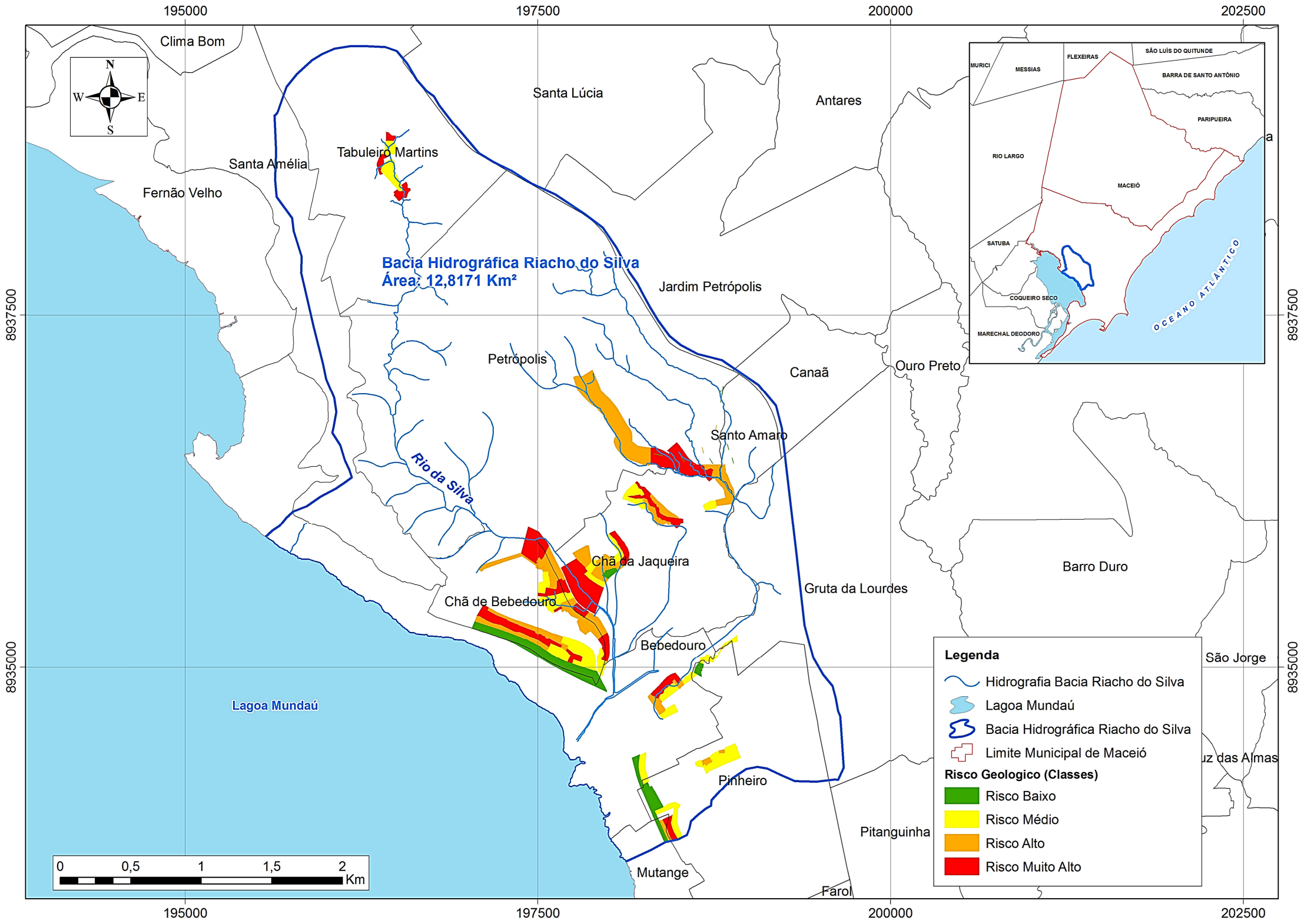
Antares

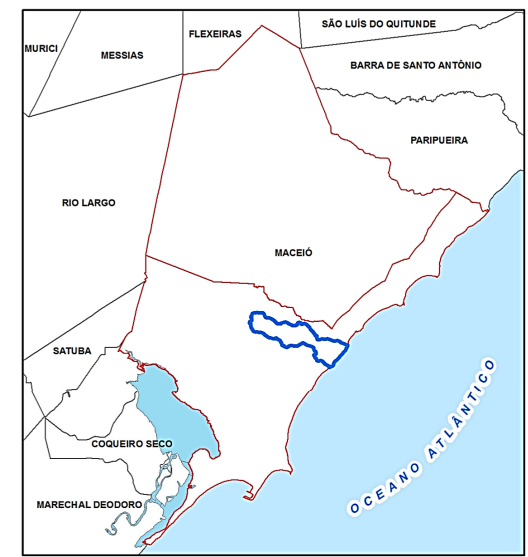
200000

202500

8942500

8942500





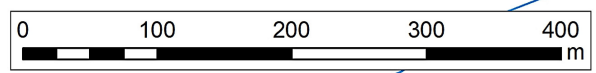
8942500

8942500








Bacia Hidrográfica Riacho Garça Torta
Área: 11,0515 Km²

Benedito Bentes

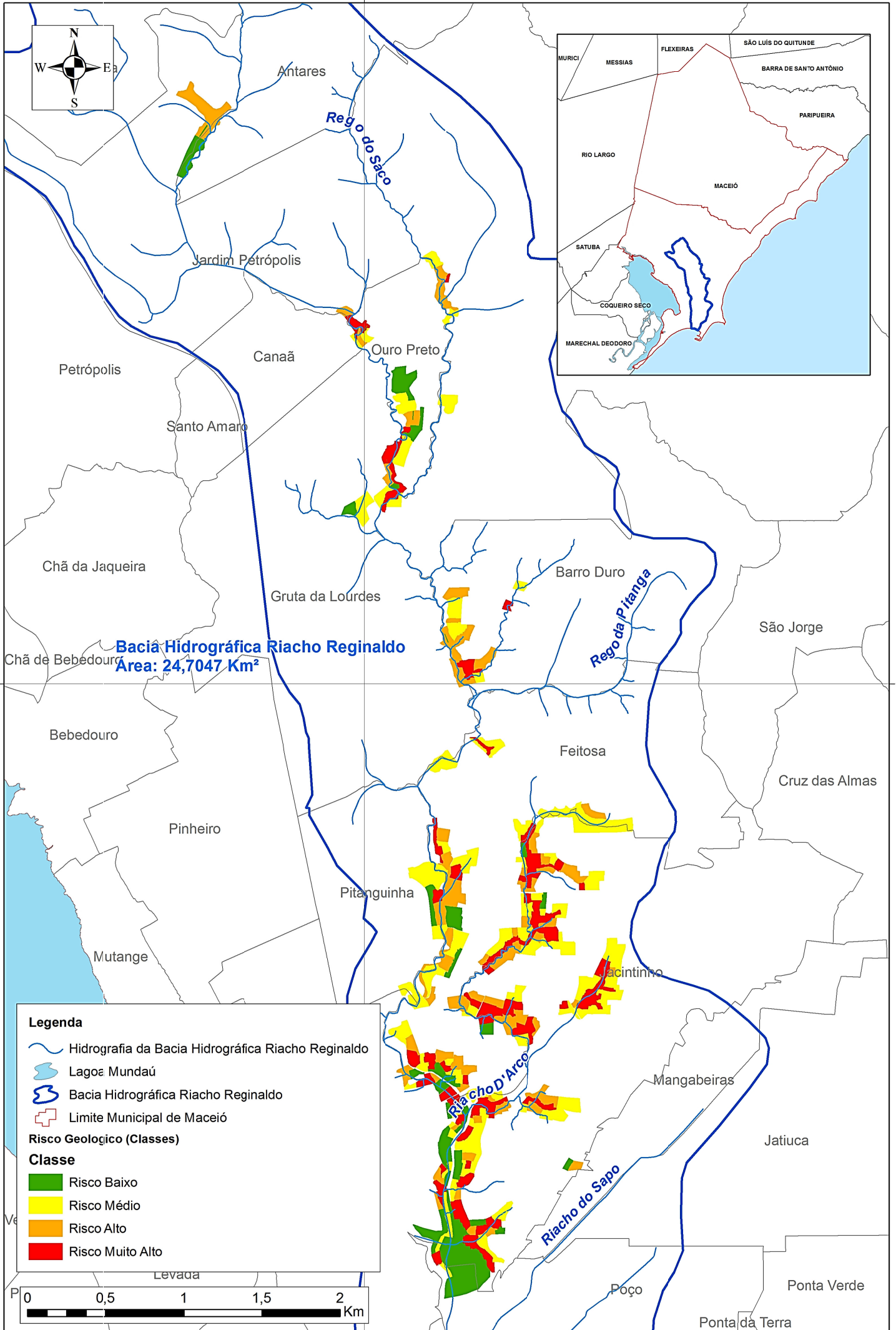
Riacho da Garça Torta



Legenda

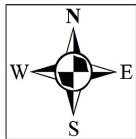
-  Hidrografia Bacia Hidrográfica Riacho Garça Torta
-  Bacia Hidrográfica Riacho Garça Torta
-  Limite Municipal de Maceió
- Risco Geológico (Classe)**
-  Risco Baixo
-  Risco Médio
-  Risco Alto
-  Risco Muito Alto

20000



20000

200000



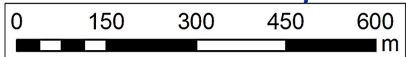
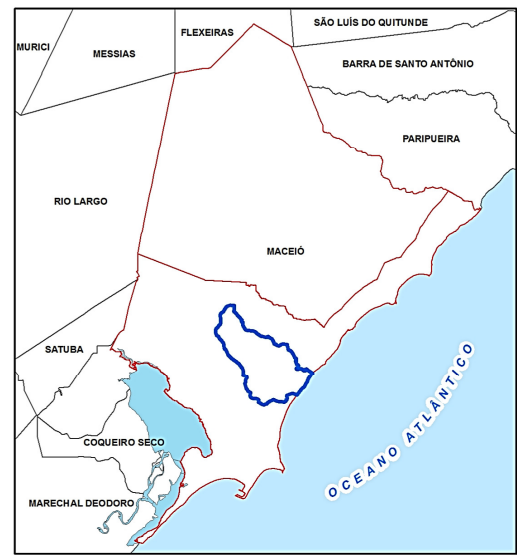
Cidade Universitária

Tabuleiro Martins








Antares

Benedito Bentes

Bacia Hidrográfica Rio Jacarecica
Área: 26,2103 Km²



Legenda

-  Hidrografia da Bacia Rio Jacarecica
-  Bacia Hidrográfica Rio Jacarecica
-  Limite Municipal de Maceió
- Risco Geológico (Classes)**
-  Risco Baixo
-  Risco Médio
-  Risco Alto
-  Risco Muito Alto

200000

210800

211400

212000

212600

213200

8945600

8945600

8945000

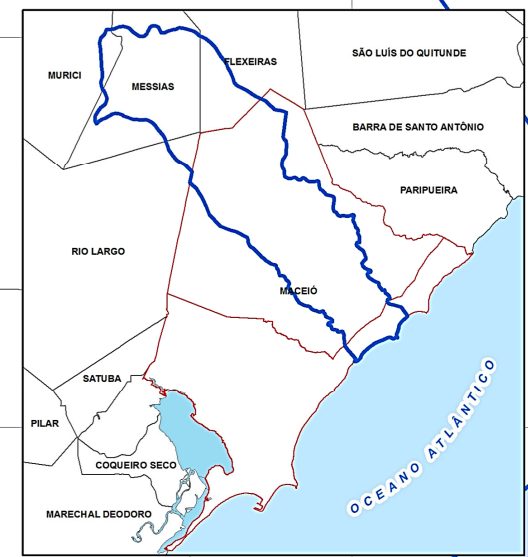
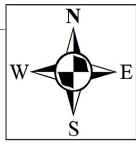
8945000

8944400

8944400

8943800

8943800



Área Rural de Maceió

Bacia Hidrográfica Rio Meirim
Área: 265,358 Km²



Pescaria

Área Urbana de Maceió

Ipioca

Riacho Doce

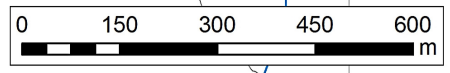
OCEANO ATLANTICO

Legenda

- Hidrografia da Bacia Hidrográfica Rio Meirim
- Bacia Hidrográfica Rio Meirim
- Limite Municipal de Maceió
- Divisão Municipal

Risco Geológico (Classes)

- Risco Baixo
- Risco Médio
- Risco Alto



210800

211400

212000

212600

213200



Feitosa

