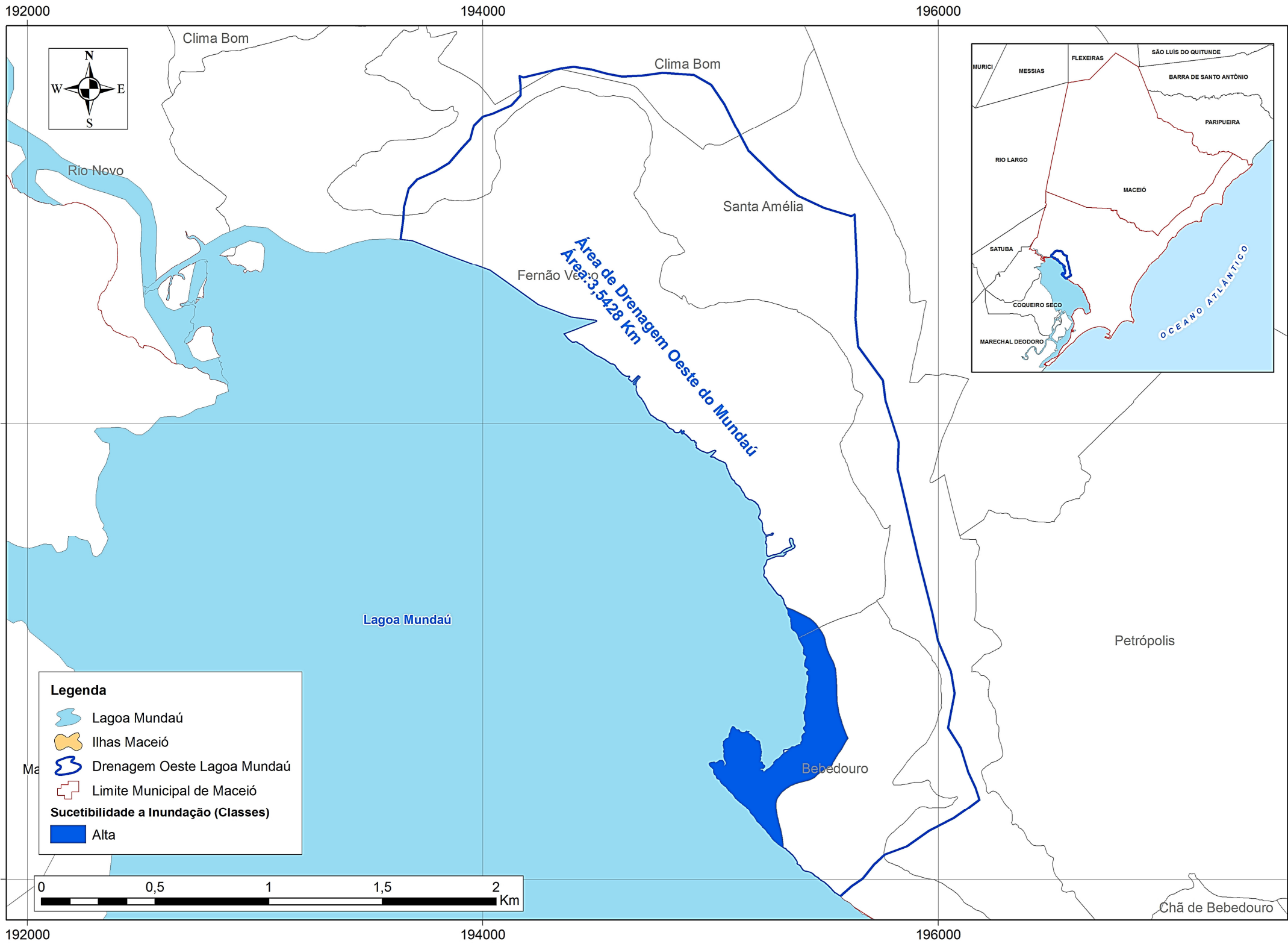




## **ANEXO 10: FIGURAS SUSCETIBILIDADE À INUNDAÇÃO**



Clima Bom

Clima Bom

Rio Novo

Santa Amélia

Fernão Veloso

Área de Drenagem Oeste do Mundaú  
 Área: 3,5428 Km

Lagoa Mundaú

Bebedouro

Petrópolis

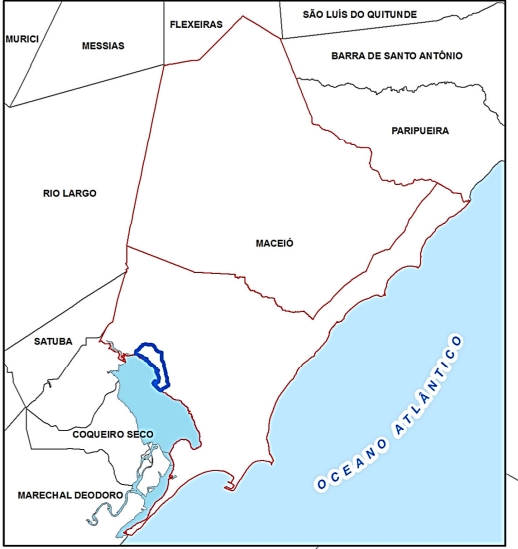
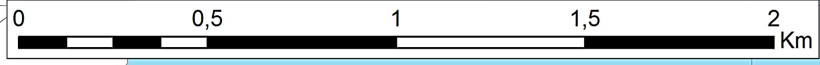
Chã de Bebedouro

**Legenda**

- Lagoa Mundaú
- Ilhas Maceió
- Drenagem Oeste Lagoa Mundaú
- Limite Municipal de Maceió

**Sucetibilidade a Inundação (Classes)**

- Alta



8936000

8936000

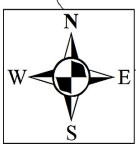
192000

194000

196000

8936000

205000



Serraria

Barro Duro

São Jorge

Jacarecica

**Bacia Hidrográfica Riacho Águas de Ferro**  
**Área: 5,4285 Km<sup>2</sup>**

Feitosa

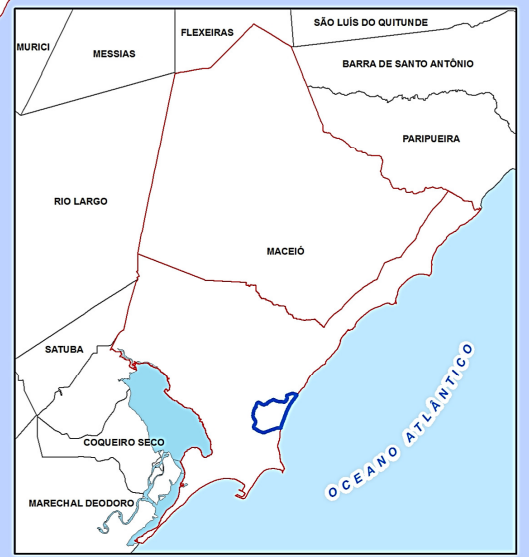
Cruz das Almas

Jacintinho

Riacho Água da terra








Mangabeiras

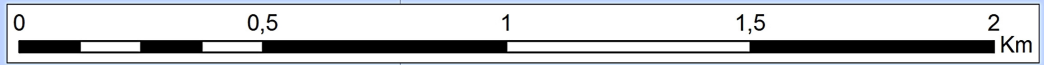
Mangabeiras



OCEANO ATLÂNTICO

**Legenda**

-  Hidrografia da Bacia Hidrográfica Riacho Águas de Ferro
  -  Lagoa Mundaú
  -  Bacia Hidrográfica Riacho Águas de Ferro
  -  Limite Municipal de Maceió
- Sucetibilidade a Inundação (Classes)**
-  Alta
  -  Média
  -  Baixa



205000

8935000

8935000

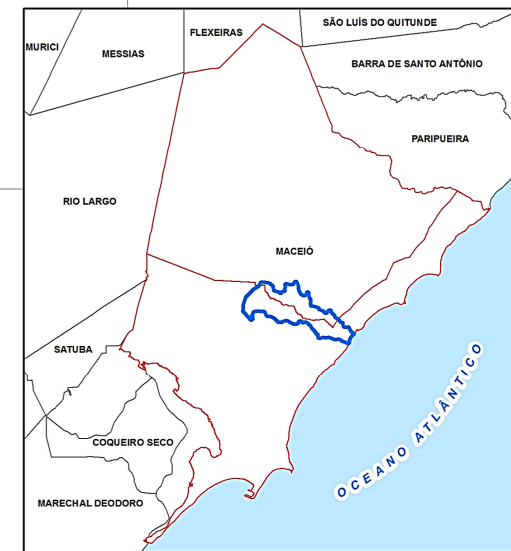
202500

205000

207500



Área Rural de Maceió



8945000

8945000

Bacia Hidrográfica Riacho Doce  
Área: 17,1141 Km<sup>2</sup>

8942500







8942500

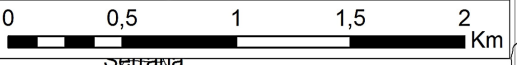
Benedito Bentes

Área Urbana de Maceió

Riacho Doce

**Legenda**

-  Hidrografia da Bacia Hidrográfica Riacho Doce
  -  Bacia Hidrográfica Riacho Doce
  -  Limite Zona Urbana e Rural
- Sucetibilidade a Inundação (Classes)**
-  Alta
  -  Média
  -  Baixa



Antares

Garça Torta

axuma

OCEANO ATLANTICO

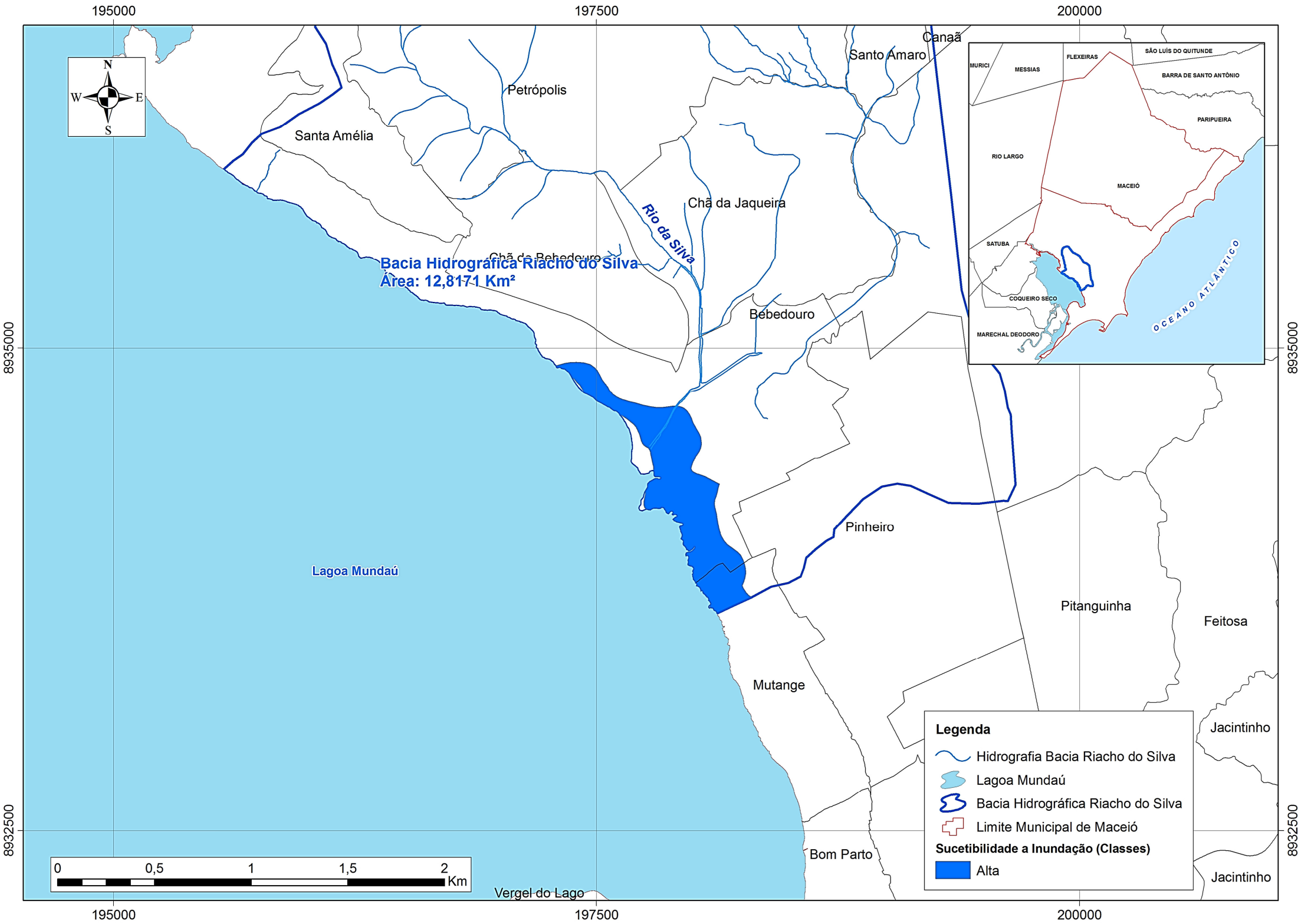
8940000

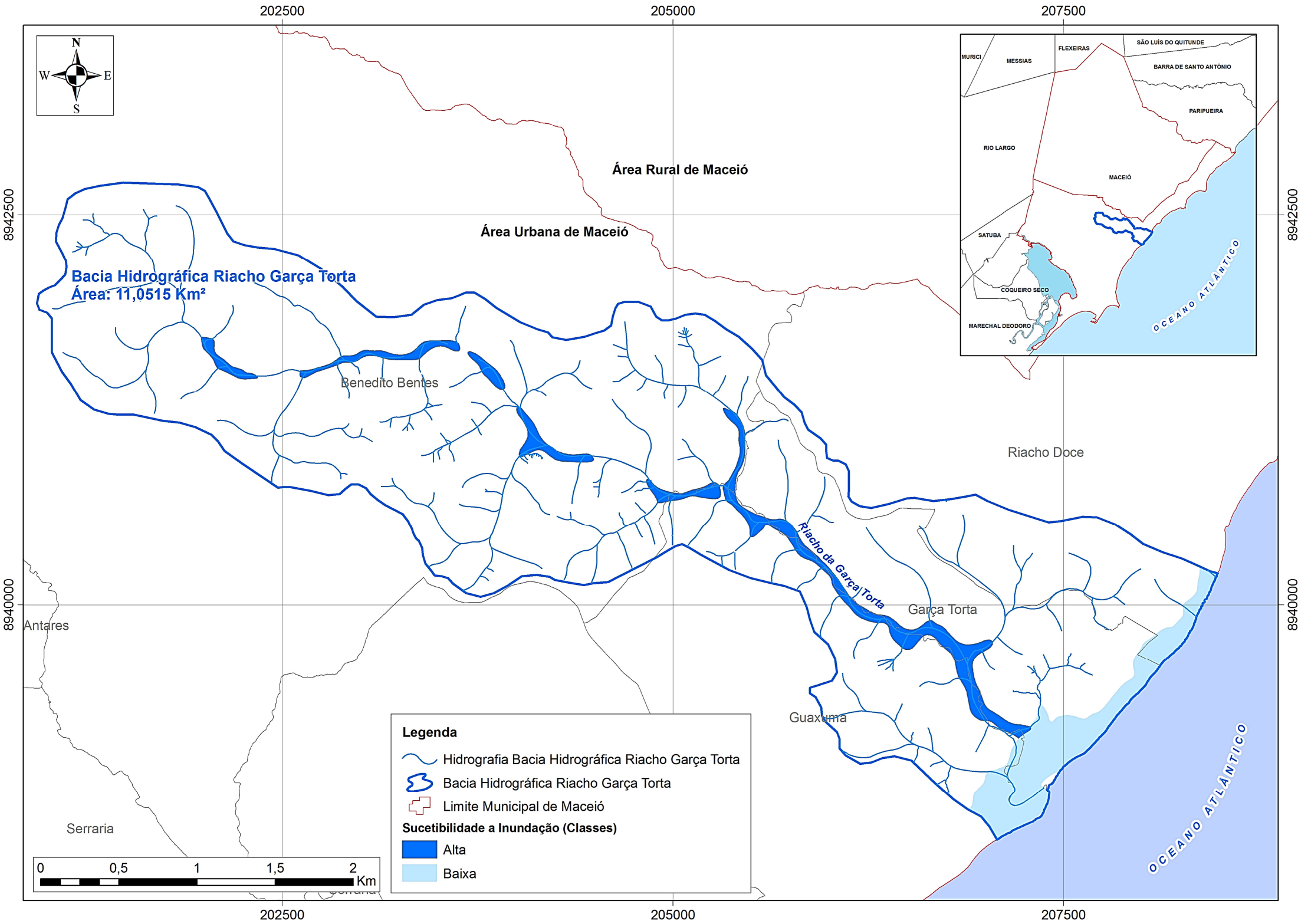
8940000

202500

205000

207500





205000

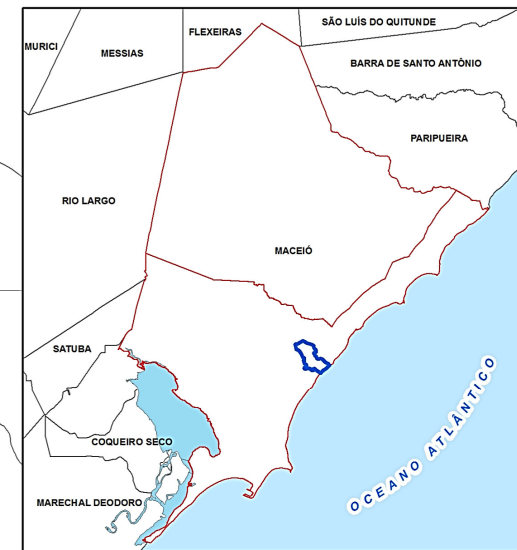


Benedito Bentes

**Bacia Hidrográfica Riacho Guanxuma**  
Área: 2,906 Km<sup>2</sup>

8940000

8940000



Guaxuma

Rio Guanxuma

Jacarecica

OCEANO ATLÂNTICO

**Legenda**

Hidrografia da Bacia Hidrográfica Riacho Guanxuma

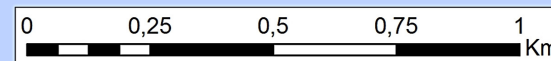
Bacia Hidrográfica Riacho Guanxuma

Limite Municipal de Maceió

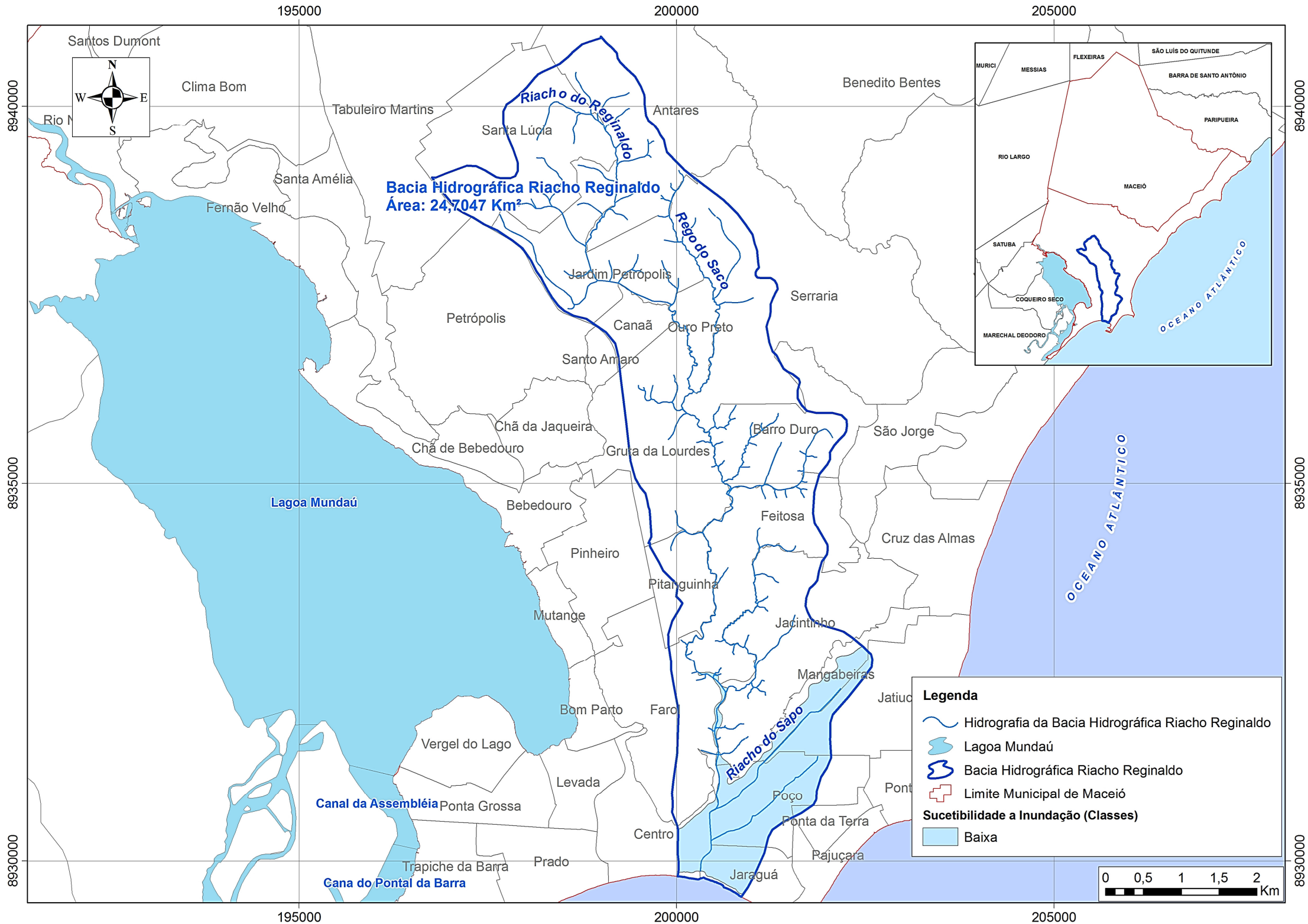
**Sucetibilidade a Inundação (Classes)**

Alta

Baixa



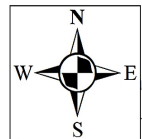
205000





200000

205000



de Universitária

Tabuleiro Martins

**Bacia Hidrográfica Rio Jacarecica**  
Área: 26,2103 Km<sup>2</sup>

Benedito Bentes

Antares

Santa Lúcia

Garça Torta

Guaxuma

Jardim Petrópolis

**Legenda**

Hidrografia da Bacia Rio Jacarecica

Bacia Hidrográfica Rio Jacarecica

Limite Municipal de Maceió

**Sucetibilidade a Inundação (Classes)**

Alta

Média

Baixa

Ouro Preto

Serraria

Jacarecica

São Jorge

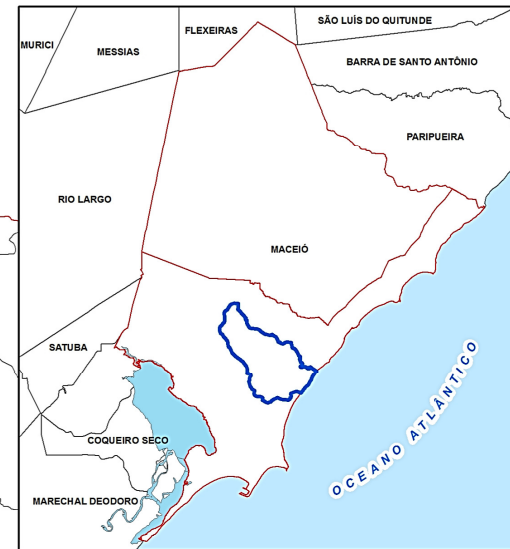
Barro Duro

200000

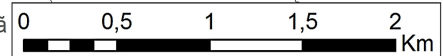
205000

8940000

8940000



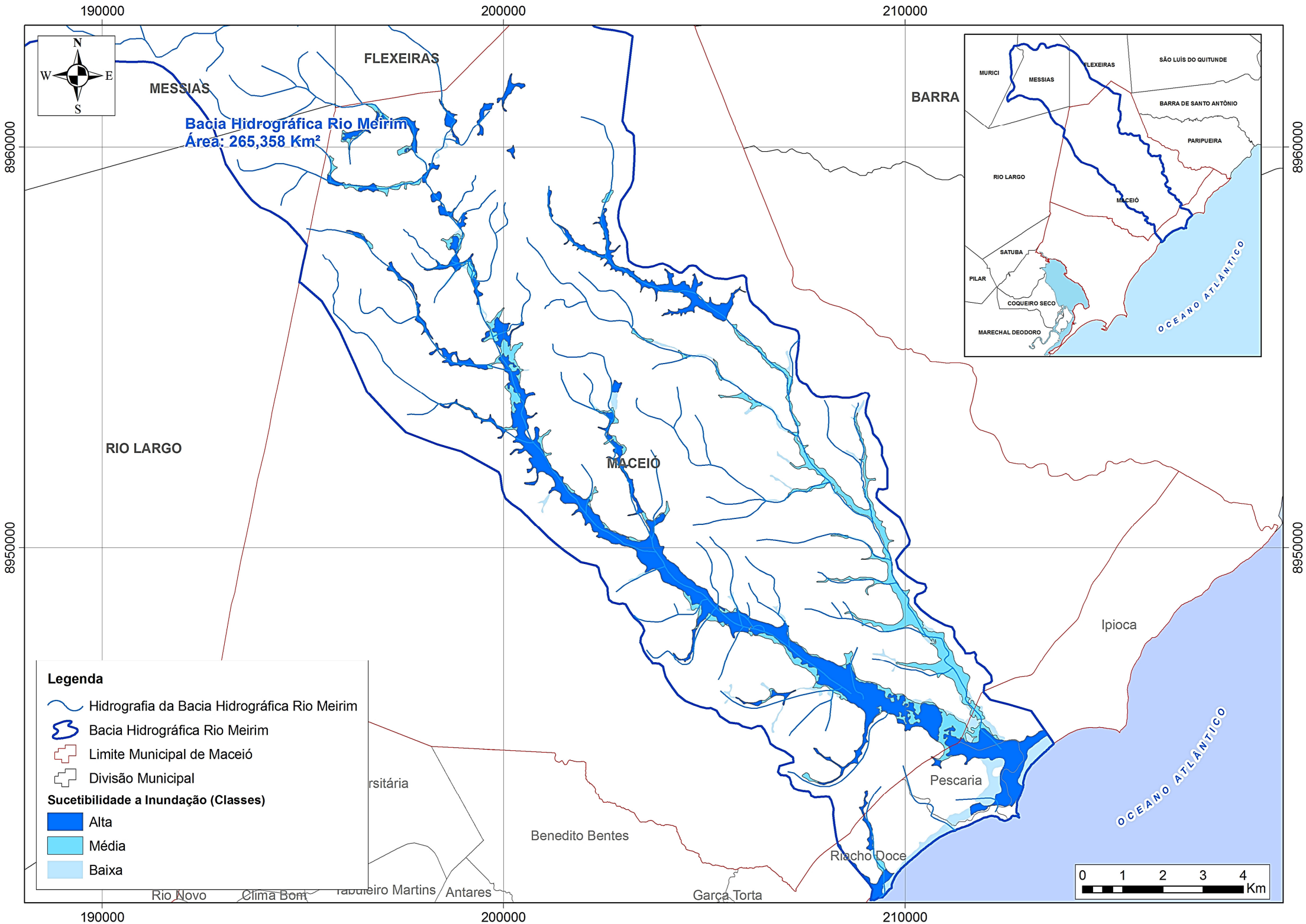
OCEANO ATLANTICO

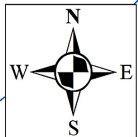


Chã

Cha da Jaqueira

es



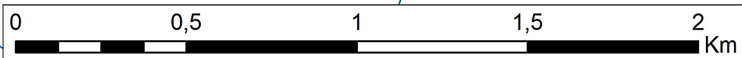


**Bacia Hidrográfica Rio Mundaú**  
Área: 4133,1345 Km<sup>2</sup>









SATUBA

MACEIÓ

SANTALUZIA DO NORTE



**Legenda**

-  Hidrografia da Bacia Hidrográfica Mundaú
-  Lagoa Mundaú
-  Ilhas Maceió
-  Bacia Hidrográfica Rio Mundaú
-  Limite Municipal de Maceió
-  Limite Estadual
- Sucetibilidade a Inundação (Classes)**
-  Alta
-  Média

200000

210000




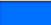
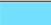
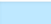


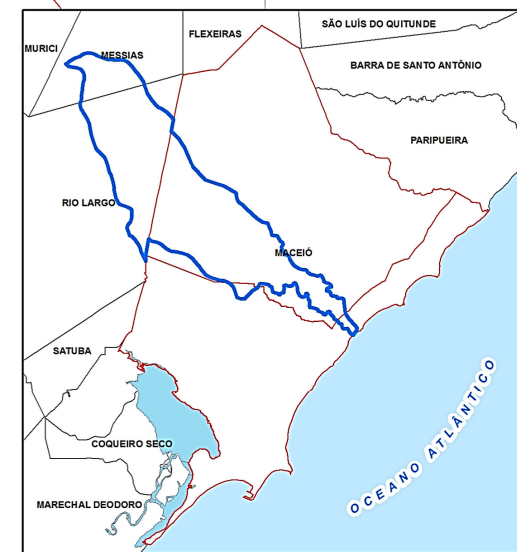
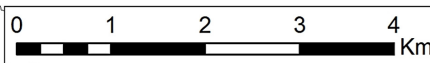
**Bacia Hidrográfica Rio Pratagy (Parcial)**  
Área: 137,0134 Km<sup>2</sup>

RIO LARGO

MACEIÓ

**Legenda**

-  Hidrografia da Bacia Hidrográfica Rio Pratagy (Parcial)
  -  Bacia Hidrográfica Rio Pratagy (Parcial)
  -  Limite Municipal de Maceió
- Sucetibilidade a Inundação (Classes)**
-  Alta
  -  Média
  -  Baixa



Ipioca

Pescaria

Benedito Bentes

Riacho Doce

OCEANO ATLANTICO

8950000

8950000

200000

210000

Rio Novo

Guilherme

Santa Lúcia

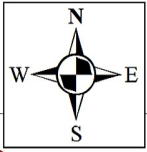
Antares

Garça Torta

205000

210000

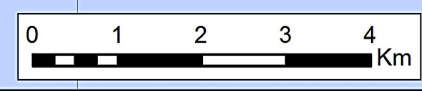
215000



**Bacia Hidrográfica Rio Sapucaia**  
 Área: 224,03 Km<sup>2</sup>

**Legenda**

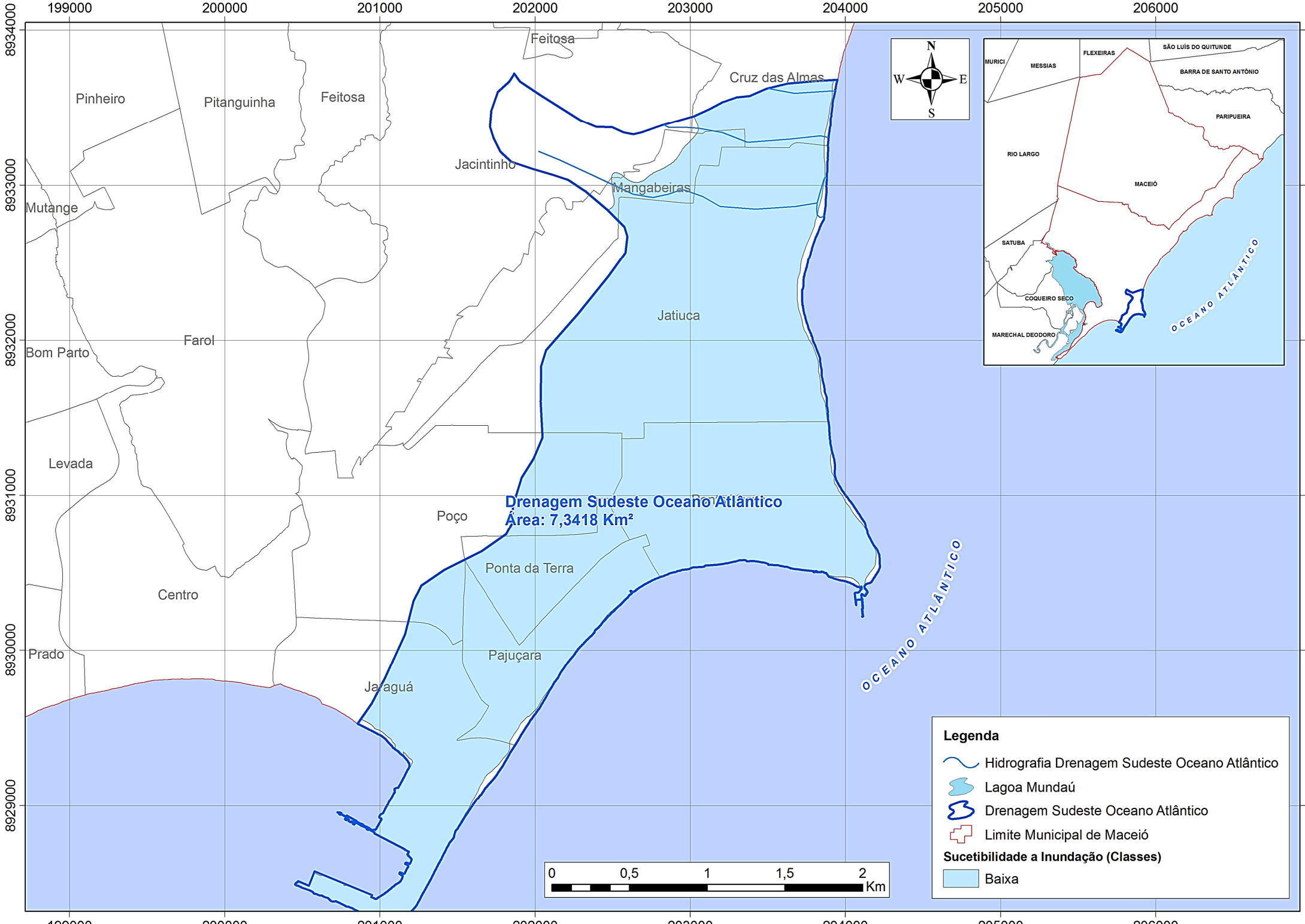
- Hidrografia Bacia Rio Sapucaia
  - Lagoa Mundaú
  - Bacia Hidrográfica Rio Sapucaia
  - Limite Municipal de Maceió
- Sucetibilidade a Inundação (Classes)**
- Alta
  - Média
  - Baixa



205000






210000

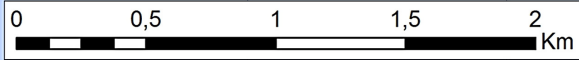
215000

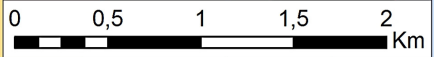
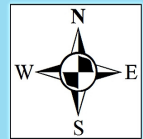
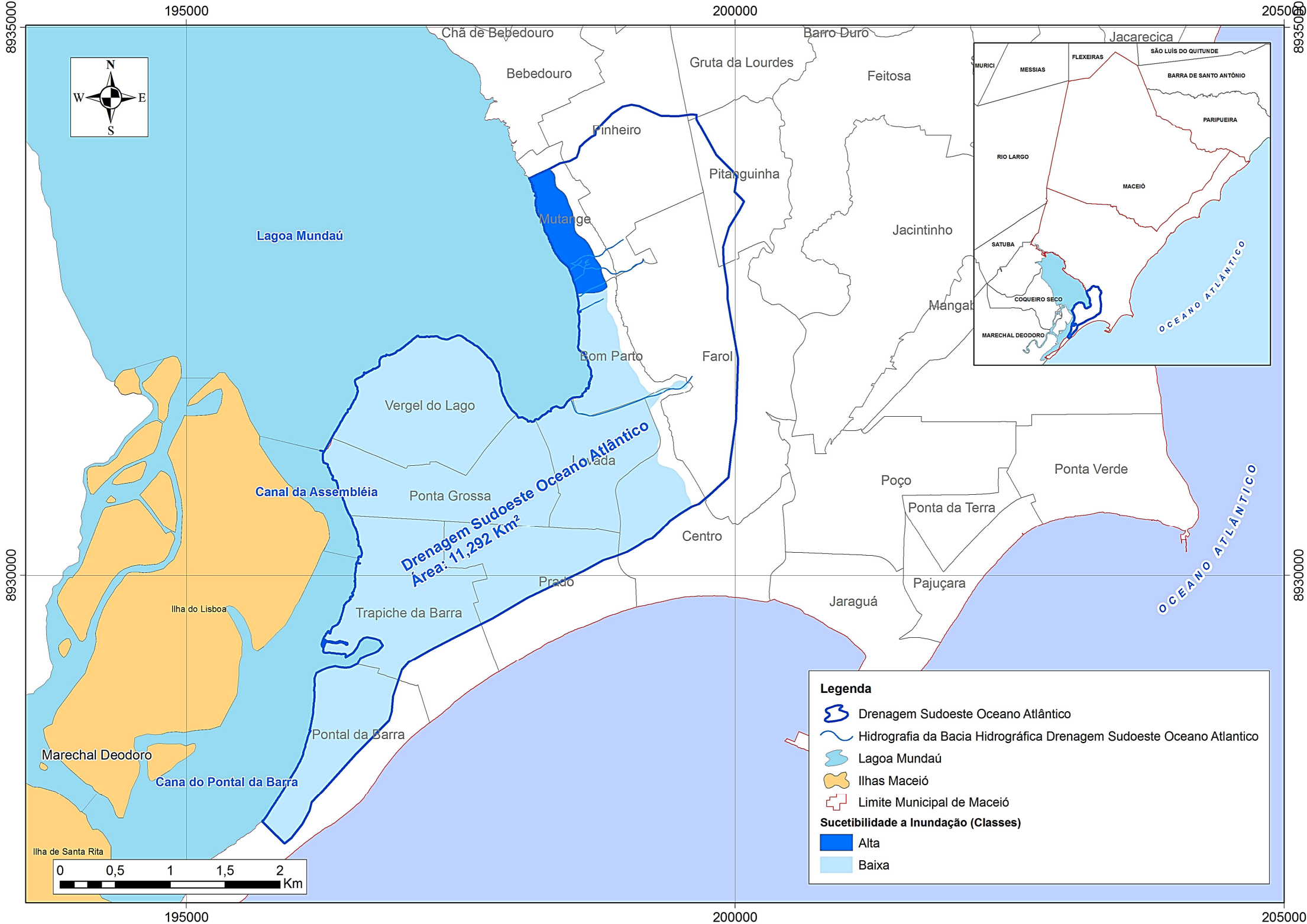


**Drenagem Sudeste Oceano Atlântico**  
**Área: 7,3418 Km<sup>2</sup>**

**Legenda**

-  Hidrografia Drenagem Sudeste Oceano Atlântico
  -  Lagoa Mundaú
  -  Drenagem Sudeste Oceano Atlântico
  -  Limite Municipal de Maceió
- Sucetibilidade a Inundação (Classes)**
-  Baixa





**Legenda**

- Drenagem Sudoeste Oceano Atlântico
- Hidrografia da Bacia Hidrográfica Drenagem Sudoeste Oceano Atlântico
- Lagoa Mundaú
- Ilhas Maceió
- Limite Municipal de Maceió

**Sucetibilidade a Inundação (Classes)**

- Alta
- Baixa

